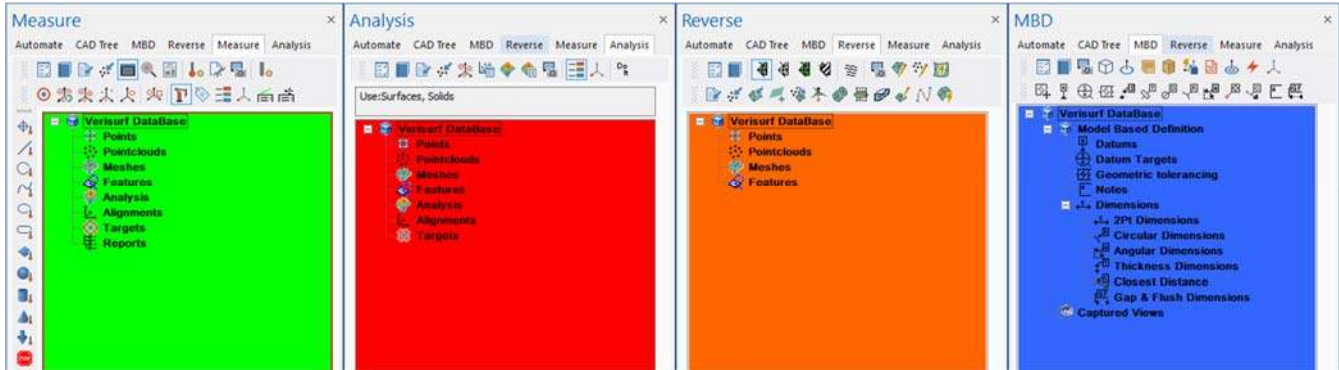


Tech Tip - Customizing the Operation Manager Appearance

The appearance of each Operations Manager is customizable allowing the operator to establish a unique look and feel for each particular "Manager" (except CATIA) to provide a quick recognition of the current Operations Manager based on color as shown in the illustrations below.



Change the Appearance

By using a right mouse click in the white field of any Operations Manager the user has the ability to modify the appearance of that particular Manager.

NOTE: The Measure Manager has added menus to modify the Measure Menu, no other Operations Manager provides these functions as Measurements can only be performed while the Measure Operations Manager is active.

